



■ ■ ■ Made In Germany

mie-scintron.com/picola

PICOLA SCINTRON

THYROID GAMMA CAMERA SYSTEM

PICOLA SCINTRON

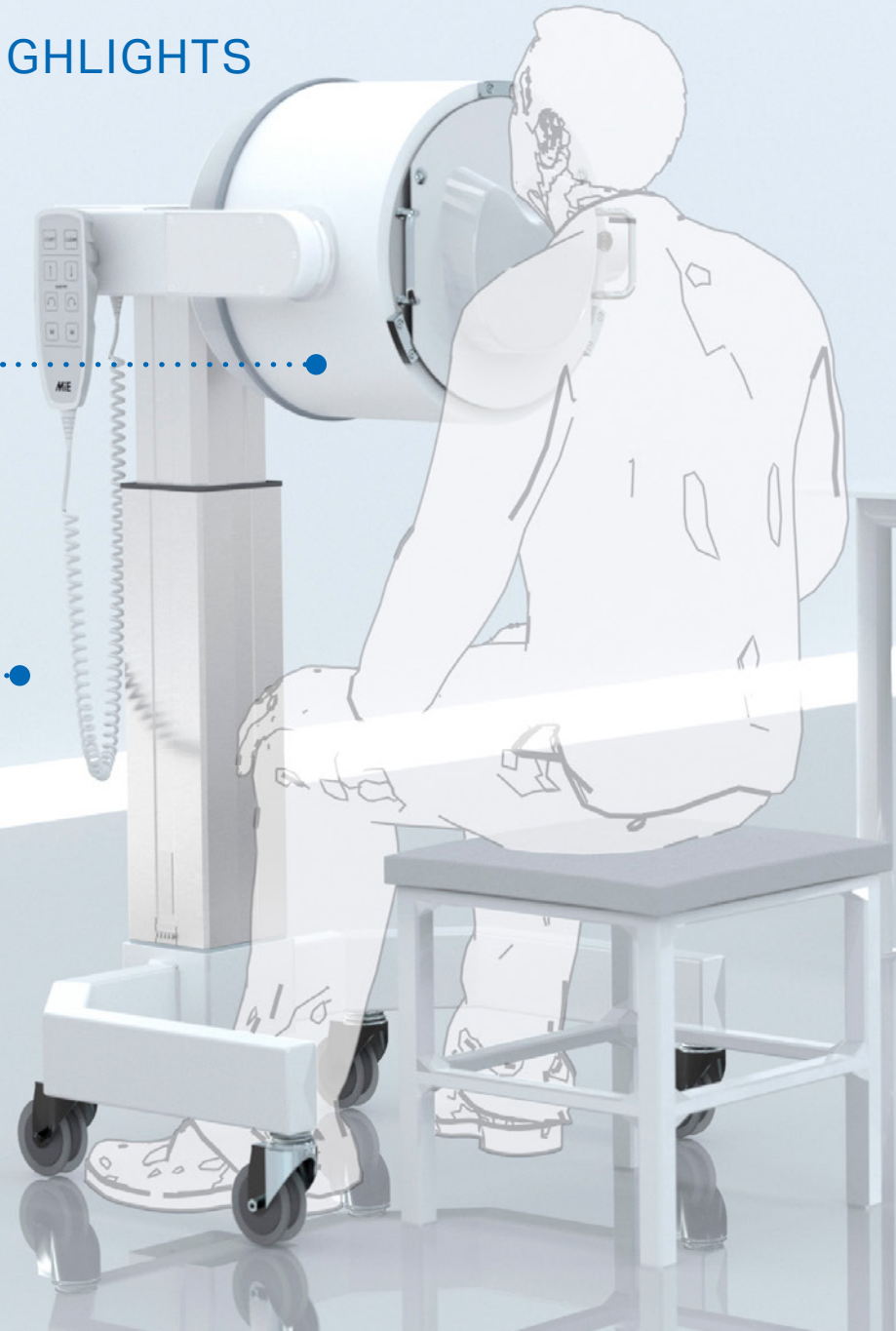
SYSTEM HIGHLIGHTS

DIGITAL DETECTOR

- ▶ 25.4 cm (10") field of view with 37 PMTs for excellent resolution
- ▶ Lead shielding for energies up to 400 keV
- ▶ High integrated Detector Electronic FRED (Fast Response Enhanced Detector)
- ▶ 3/8" NaI(Tl) Scintillation-Crystal

SMALL FOOTPRINT

- ▶ Minimum space requirements – width 80 cm (31.5") / depth 72 cm (28")
- ▶ Magnetic remote control with marker and acquisition start / stop functionality
- ▶ Detector tilt from 90° cranial to 90° caudal position
- ▶ Continuous, silent adjustment of detector height and tilt for exact patient positioning



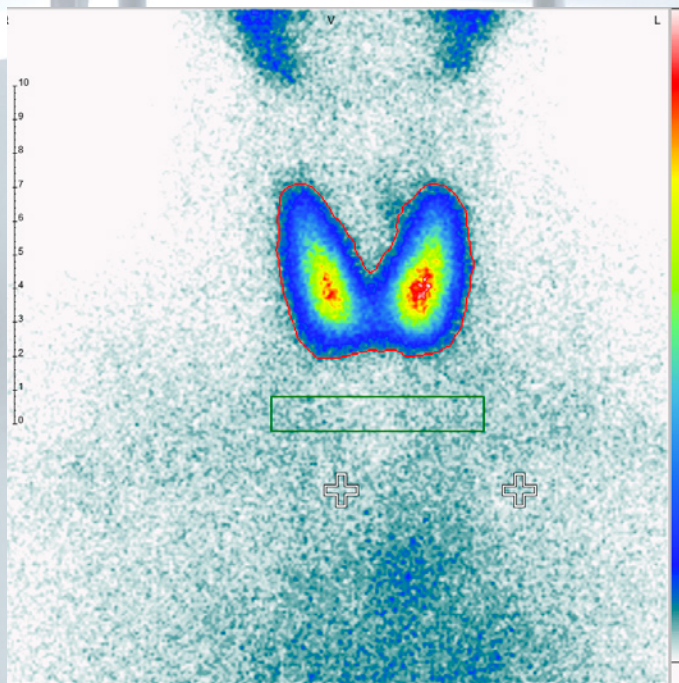
SCINTRON 7 NM

SOFTWARE HIGHLIGHTS

The SCINTRON software contains a wide variety of organ specific processing programs. In addition, general processing tools allow for evaluation of studies customized to your needs.

Quantification and viewing made easy by intuitive program structure and fast access of result screens. Individual masks and export functions round out the results to fit your clinical and documentation requirements.

The SCINTRON system includes a DICOM-interface for seamless communication with RIS/HIS and PACS. The workstation allows for parallel acquisition and processing for a time saving work routine.



THYROID UPTAKE

- ▶ Multiple selections of measurement devices camera or calibrator for syringe activity
- ▶ Simple organization of syringe data using numbers which enable fast calibration of several syringes in a row
- ▶ Setting of anatomical markers after thyroid acquisition
- ▶ Processing of suppression test acquisitions for calculation of pre / post suppression ratio
- ▶ Selectable ROI type, size and location, easy program handling

RADIOIODINE TEST

- ▶ Calculation of individual therapy dose from I-131 test acquisitions
- ▶ Determination of the effective half-life of several iodine uptake measurements
- ▶ Calculation from only one measurement after 5-8 days of capsule application
- ▶ Calculation with one measurement after 24h with default half-life values



mie-scintron.com/picola

MiE SUPPORT

SERVICE AND SUPPORT

Family owned, independent and dedicated to the field of nuclear medicine since 1981, the company offers a high level of knowledge that is an essential part of our products. Over the last several decades we established the full production line at our headquarter in Germany, including soft- and hardware development and mechanical production. This allows for direct access to experts of each department and fast support via phone and / or remotely. Additionally our local partners can provide immediate service on site if necessary.



MiE America Inc.
420 Bennett Road
Elk Grove Village, IL 60007
U.S.A

Tel. +1 847 981 6100
Fax +1 847 981 3232

mie@mieamerica.com
www.mie-scintron.com

MiE GmbH
Hauptstrasse 112
23845 Seth
Germany

Tel. +49 4194 9977 0
Fax +49 4194 9977 55

mie@miegermany.de
www.mie-scintron.com

CE 1024