

■ ■ ■ Made In Germany

[mie-scintron.com/syngula](http://mie-scintron.com/syngula)

# SYNGULA SCINTRON

GAMMA CAMERA SYSTEM FOR PLANAR IMAGING

# SYNGULA SCINTRON

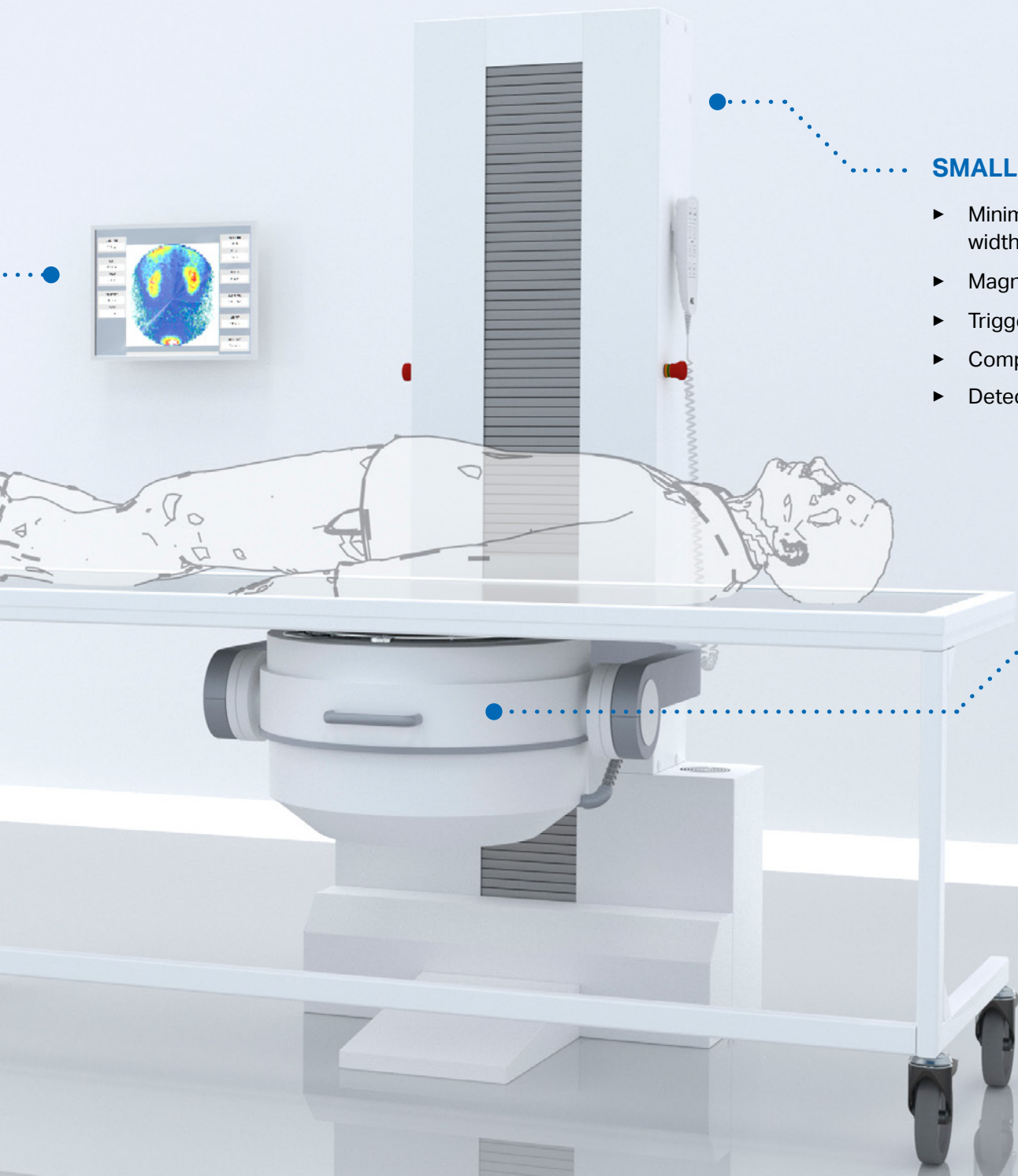
## SYSTEM HIGHLIGHTS

### HIGHLY VERSATILE

- ▶ Thyroid scintigraphy (Tc-99m, I-123, I-131) with uptake-calculation
- ▶ Kidney scintigraphy (TER, GFR and ERPF calculation)
- ▶ Bones scintigraphy (3 phase protocol, static images, ROI-quantification)
- ▶ Static studies (SLN, lung, kidney, RSO-scintigraphy)
- ▶ Dynamic studies (gastric emptying, esophagus, salivary glands, gallbladder-EF, HIDA)
- ▶ MUGA studies (multi gated)

### USER FRIENDLY

- ▶ Thyroid positioning device easily positioned for syringe measurements and uptake calculations
- ▶ Mobile patient table for posterior kidney imaging
- ▶ Magnetic remote control with marker and acquisition start / stop functionality
- ▶ Hospital bed imaging of immobile patients



### SMALL FOOTPRINT

- ▶ Minimal space requirements  
width 89 cm (35") – height 201 cm (79") – depth 122 cm (48")
- ▶ Magnetic remote control can be placed freely at the gantry
- ▶ Trigger input for ECG-gating of MUGA studies
- ▶ Compact stand for patient imaging in standing, sitting and lying position
- ▶ Detector rotation  $-45^{\circ}$  to  $+45^{\circ}$  / Detector tilt  $-125^{\circ}$  to  $+125^{\circ}$

### DIGITAL DETECTOR

- ▶ 38.7 cm (15.2") field of view
- ▶ 37x 3" PMTs for excellent resolution
- ▶ Lead shielding for energies up to 400 keV
- ▶ High-integrated Detector Electronic FRED (Fast Response Enhanced Detector)
- ▶ 3/8" NaI(Tl) Scintillation-Crystal

# SCINTRON 7 NM

## SOFTWARE HIGHLIGHTS

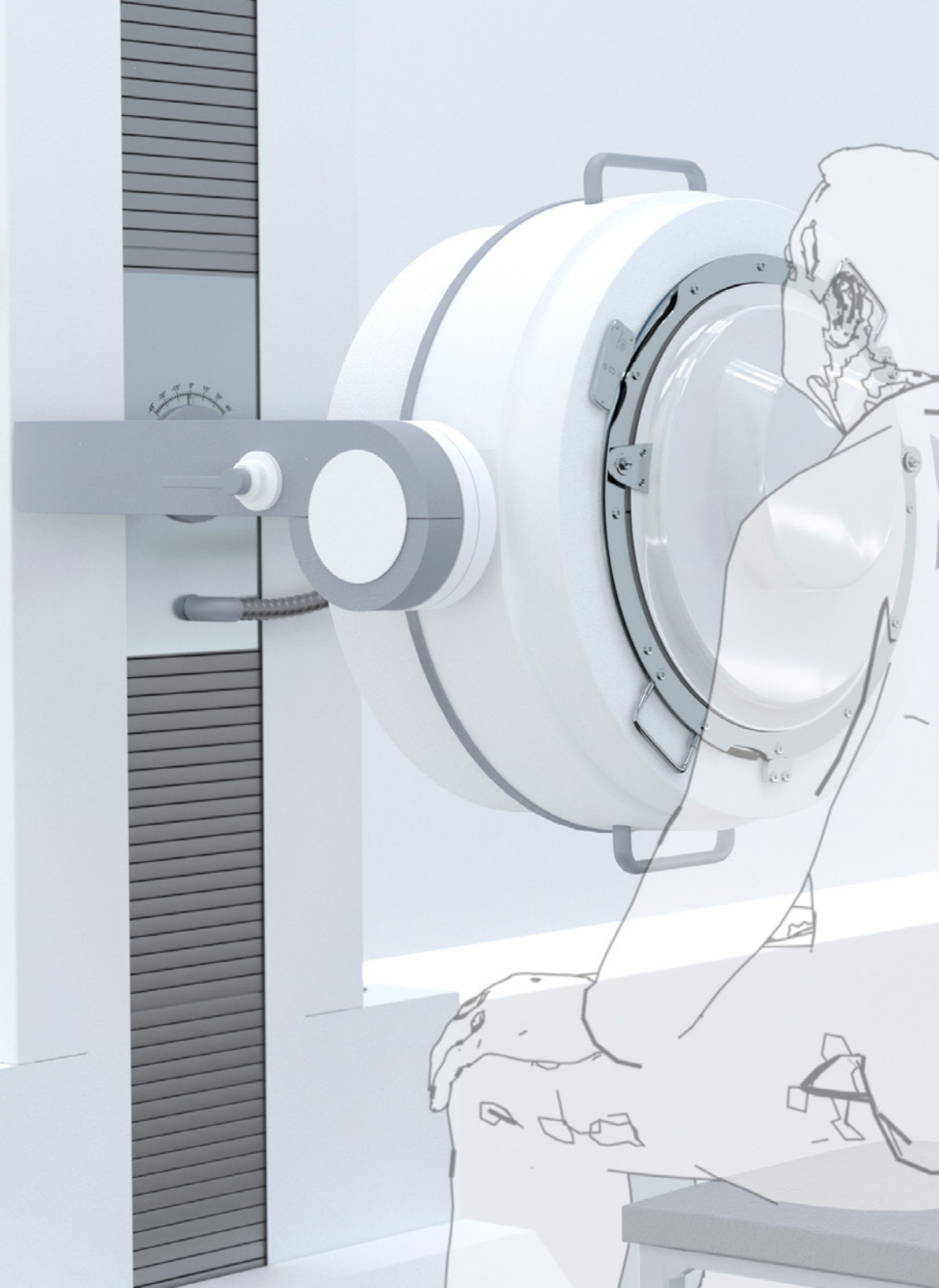
The SCINTRON software contains a wide variety of organ specific processing programs. In addition, general processing tools allow for evaluation of studies customized to your needs.

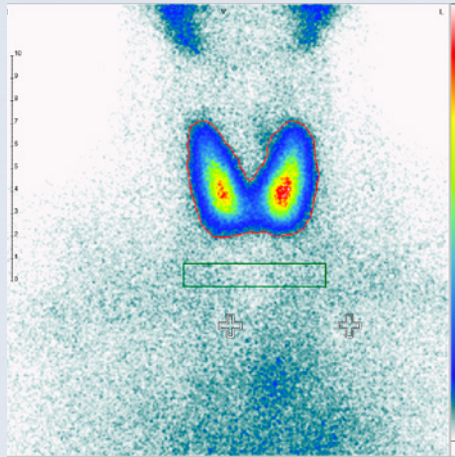
Quantification and viewing made easy by intuitive program structure with fast access of result screens. Individual masks and export functions round out the results to fit your clinical and documentation requirements.

The SCINTRON system includes a DICOM-interface for seamless communication with RIS/HIS and PACS. The workstation allows for parallel acquisition and processing for a time saving work routine.

### RADIOIODINE TEST

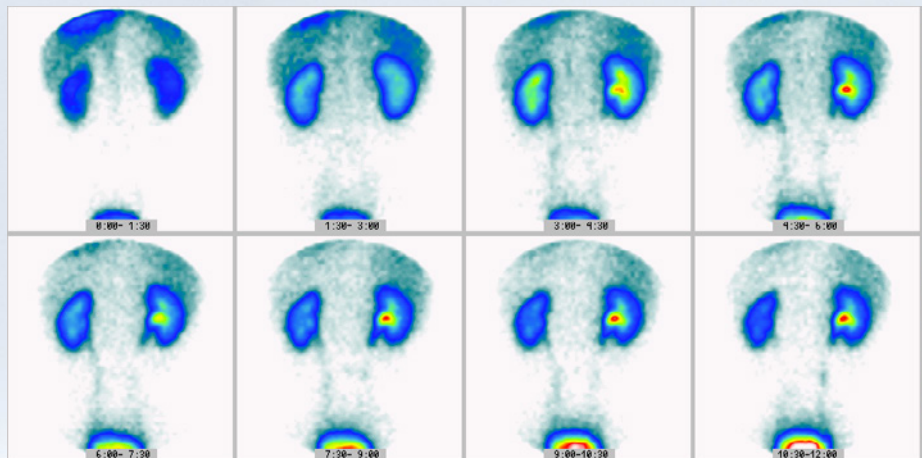
- ▶ Calculation of individual therapy dose from I-131 test acquisitions
- ▶ Determination of the effective half-life of several iodine uptake measurements
- ▶ Calculation from only one measurement after 5-8 days of capsule application
- ▶ Calculation with one measurement after 24h with default half-life values





## THYROID UPTAKE

- ▶ Multiple selections of measurement devices camera or calibrator for syringe activity
- ▶ Simple organization of syringe data using numbers which enable fast calibration of several syringes in a row
- ▶ Setting of anatomical markers after thyroid acquisition
- ▶ Processing of suppression test acquisitions for calculation of pre / post suppression ratio
- ▶ Selectable ROI type, size and location, easy program handling



## KIDNEY FUNCTION

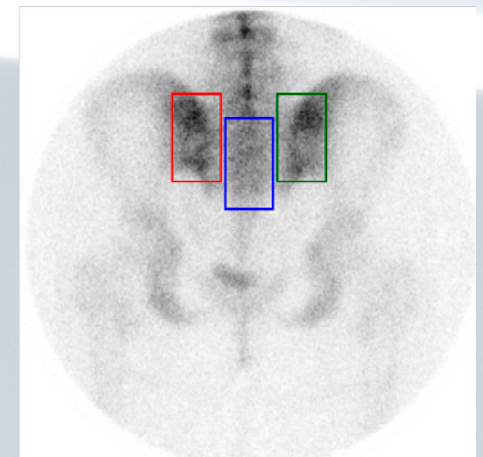
The SCINTRON workstation offers a live-display of the renal curve during acquisition. Additionally the workstation offers several processing methods for quantifying kidney function:

- ▶ TER (MAG3) with and without blood samples
- ▶ GFR (DTPA) without blood samples
- ▶ ERPF (MAG3) without blood samples
- ▶ Calculation of split function
- ▶ Evaluation of renal transplant and single kidney studies

## BONE SCINTIGRAPHY

Processing of up to 3 phases including ROI comparison and curve display:

- ▶ Evaluation of sacroiliac joints
- ▶ 2 or 3-phase analysis (perfusion, bloodpool and bone phase)
- ▶ The result screen includes numerical and graphical data



# MiE SUPPORT

## SERVICE AND TECHNICAL DATA

### SUPPORT & SERVICE

Family owned, independent and dedicated to the field of nuclear medicine since 1981, the company offers a high level of knowledge that is an essential part of our products. Over the last several decades we established the full production line at our headquarter in Germany, including soft- and hardware development and mechanical production. This allows for direct access to experts of each department and fast support via phone and / or remotely. Additionally our local partners can provide immediate service on site if necessary.

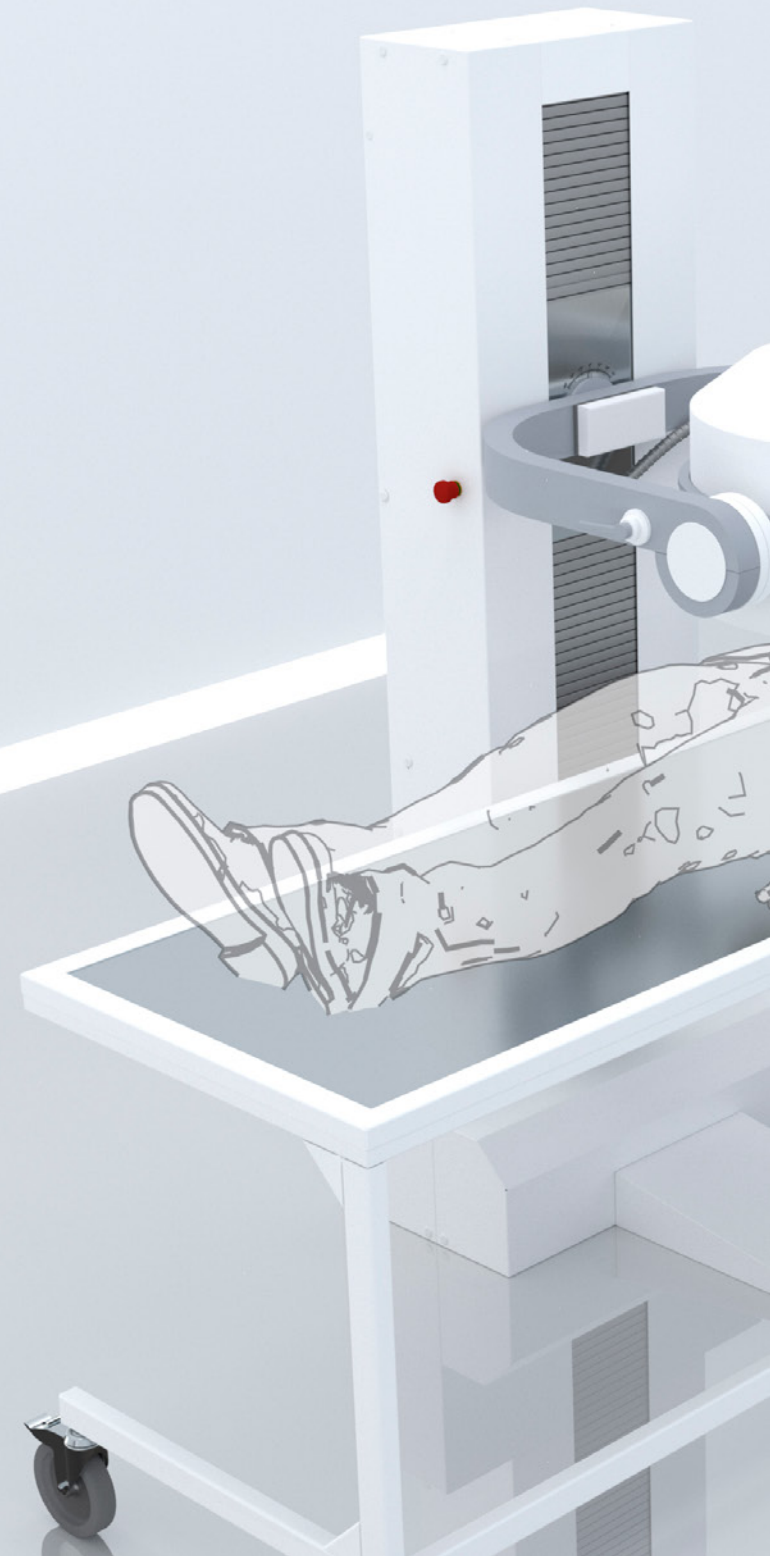
### WINDOWS 10 WORKSTATION

The integrated SCINTRON workstation is the core part of all MiE systems which allows for parallel acquisition and processing of different studies. To fulfill the high demand of network security, SCINTRON runs on the Windows 10 operating system.

### UPDATES & UPGRADES

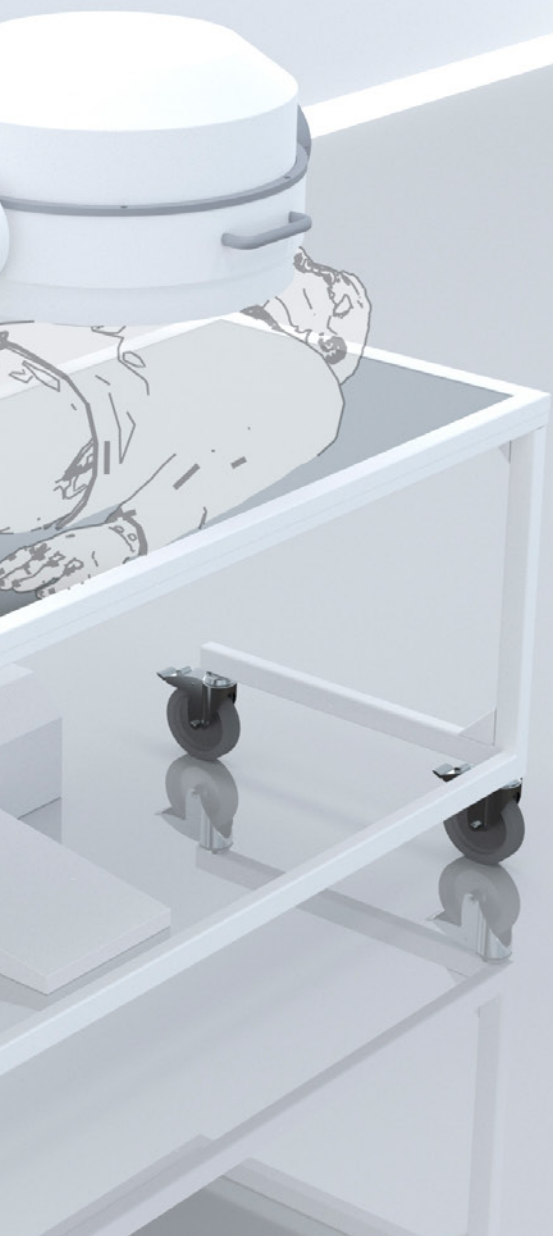
Due to an ongoing development of SCINTRON software, the customer benefits with the latest processing tools according to current medical guidelines.

MiE guarantees 10+ years of spare part availability and service support carried out by MiE engineers or certified partner companies.



## TECHNICAL DATA & ACCESSORIES

Detector	Detector Type	circular
	Field of View (FOV)	Ø 38.7 cm (15.2")
	Number of PMTs	37x 3"
	Crystal Thickness	9.5 mm (3/8")
	Energy Range	up to 400 keV
Positioning	Detector Rotation Range	-45° to +45°
	Detector Tilt Range	-125° to +125°
Dimensions	Height	202 cm (79")
	Width	89 cm (35")
	Depth	122 cm (48")
Vertical Movement	Total Vertical Travel	100 cm (39.5")
	Speed	150 cm/min
Weight	Without Collimator	650 kg (1433 lbs)
Collimators	Low Energy	LEHR, LEAP, Long bore
	Medium Energy	MEGP
	Pinhole	Various inserts available
	High Energy	HEGP
Accessories	Positioning Support	Patient Table
		Kidney Chair
		Thyroid Positioner
		ECG Trigger
		Additional P-Scope





[mie-scintron.com/syngula](http://mie-scintron.com/syngula)



MiE America Inc.  
420 Bennett Road  
Elk Grove Village, IL 60007  
U.S.A

Tel. +1 847 981 6100  
Fax +1 847 981 3232

[mie@mieamerica.com](mailto:mie@mieamerica.com)  
[www.mie-scintron.com](http://www.mie-scintron.com)

MiE GmbH  
Hauptstrasse 112  
23845 Seth  
Germany

Tel. +49 4194 9977 0  
Fax +49 4194 9977 55

[mie@miegermany.de](mailto:mie@miegermany.de)  
[www.mie-scintron.com](http://www.mie-scintron.com)

CE 1024